

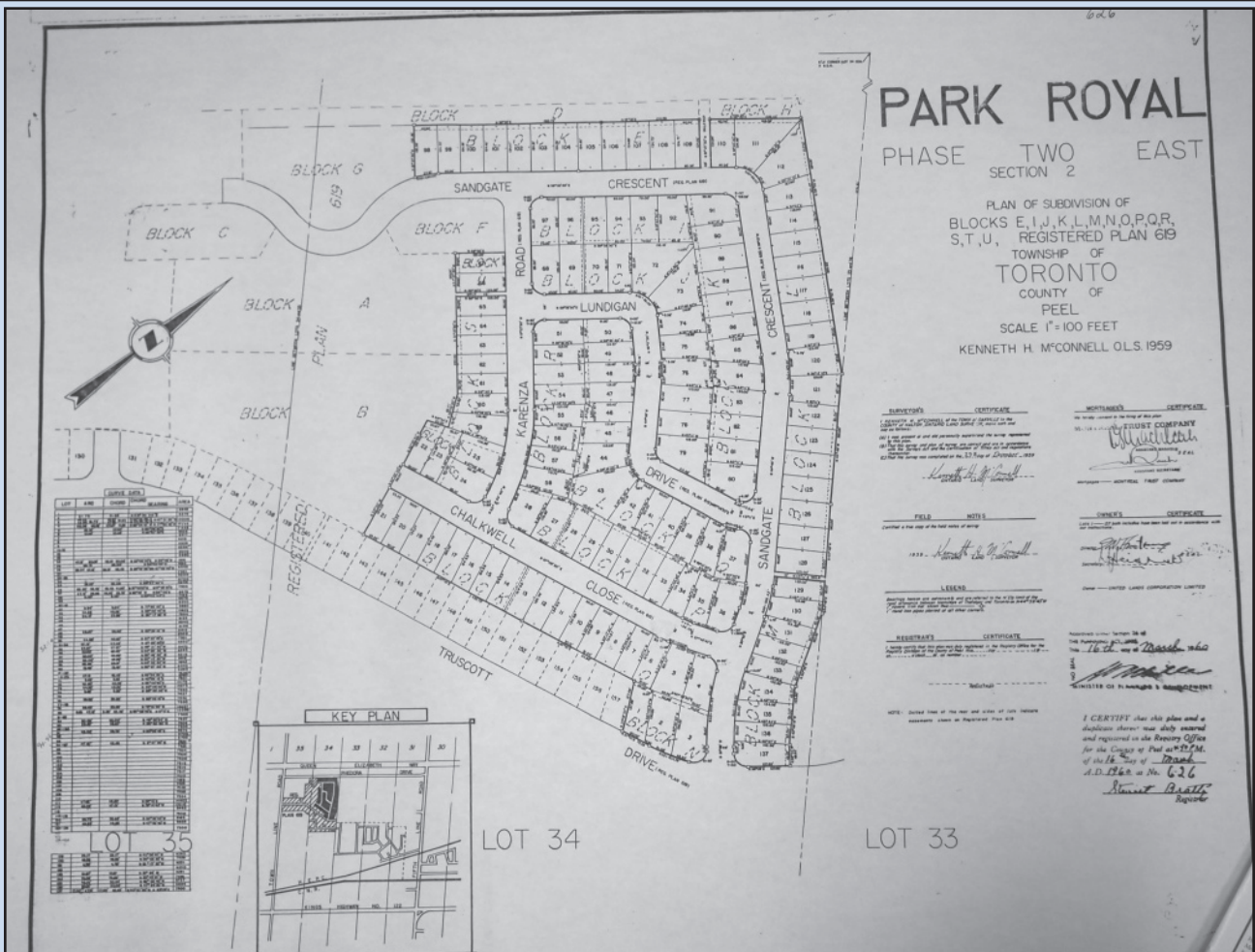


Park Royal Community News

Park Royal Community Association since 1956

September 2018

Volume 8 Issue 3



Courtesy of Heritage Mississauga

An original plan for Phase Two East of the development of Park Royal. Both Park Royal and the Park Royal Community Association turned 60 years old this summer. Read the history on the back page.

Watermain Replacement Update

Work on watermain construction on Benedet Drive, Birch and Poplar Crescents, Vey Road, Tredmore Drive, Harman and Selord Courts and Playford Road, Wiseman Court, Ludbrook Court, Bray Court, Thetford Court, Hartington Court, Nigel Road, Utley Road, Agora Road and Canford Crescent, and along Southdown Road from South Sheridan Way to Wiseman Court is complete except for some deficiencies that will be repaired shortly.

Construction began in the summer along the multi-use trail in Kodgadywin Park between Benedet Drive and Southdown Road. Sections of the multi-use trail will be temporarily closed during construction until it completes in summer 2019.

Beginning this fall, Benedet Drive will be reduced to one lane with southbound traffic for a period of approximately six months during construction of a tunnelled crossing of the QEW.

Clarkson Toastmasters in Park Royal

Are you looking to improve your speaking and leadership skills? Learn how to present your ideas clearly and to communicate effectively at The Clarkson Toastmasters Club. Come and experience a meeting as a guest! Toastmasters International is a well-known program to help you build self-

confidence and overcome nervousness when speaking and to develop impromptu speaking skills. Members can access Pathways, Toastmasters' online leadership & communications training program that provides self-paced learning.

The club is now sponsored by the Clarkson Library and starting September 25th meets weekly on Tuesdays from 7 pm – 8:30 pm at the Clarkson Community Centre and Library. Join our Open House series on September 25th with Guest Speaker and Author, John Ribeiero, on *Communicate Your Way Into A Job - Helping Millennials and New Canadians into the Workforce*. For more information contact the Clarkson Library at 905-615-4840 or see Eventbrite, Clarkson Toastmasters.

PRCA Annual General Meeting

Our next Annual General Meeting will be held on Thursday, September 27, 2018. Registration starts at 6:30 pm and the meeting will begin at 7pm.

The Park Royal Community Association will be discussing ideas as to what you would like to see and do in the community.

All PRCA members will have an opportunity to select the board and president for 2018/2019.

Community Calendar

Clarkson Toastmasters Meetings

Tuesdays (starting September 25, 2018) from 7 pm to 8:30 pm, Clarkson Community Centre, Multipurpose Room. Improve your speaking and leadership skills. Experience a meeting as a guest.

PRCA Annual General Meeting

Thursday, September 27, 2018 (6:30 pm to 9 pm) Clarkson Community Centre, Multipurpose Room. Annual update for PRCA members and selection of the 2018-2019 Board members. Councillor Karen Ras will be providing an update.

If you have news or an event that would interest the residents of Park Royal and Benedet Woods let us know at newsletter@parkroyalca.org.

City of Mississauga Municipal Election

Monday, October 22, 2018 (All day). Elect the Mayor, Ward 2 City Councillor and school trustees. Advanced polls will be held October 5th and 6th and October 13th and 14th throughout the city.

Hillside Public School Craft Show

Saturday, October 27, 2018 (11 am to 3 pm) at Hillside Public School, 1290 Kelly Road. Join us for the 1st Annual Hillside Public School Craft Show featuring unique handmade items, bake sale, silent auction and more. \$1 donation at the door is greatly appreciated. Kids are free.



Richard Barrett B.A., LL.B.
Barrister & Solicitor

t. 905 823-1487
f. 905 823-2529
1498 Lewisham Drive
Mississauga, Ontario
L5J 3R4

lawyer@rogers.com | www.the-friendly-lawyer.com



What will your income in retirement be?

In just 10 minutes, calculate your household income in retirement and instantly download your FREE report and bonus webinar.

www.papyrusplan.com/prca

1-844-606-PLAN



TREVOR ISAAC

Buying, Selling, Financing, real estate or mortgage advice

Living and working in Park Royal to serve you better!

Direct : 416-557-1681
Office : 905-896-3333

Sales Representative
Sutton Group Realty Systems Inc. - Brokerage
www.homesinclarkson.com

"Not licensed to solicit sales under contract"



Registered Massage Therapy Services

MASSAGE 4 LIFE

1315 Canford Crescent
Mississauga, ON L5J 3M9

Tel: (905) 822-7333
Fax: (905) 822-7330

Email: karen@massage4life.ca
Website: www.massage4life.ca

Call for your appointment today!

Karen Switzer, RMT



Truscott Pharmacy



Home Health Care



Neena Popat
Pharmacy Manager

Quick & Efficient Service
Reduced Prescription Costs
Flu Shots
Open 7 days a Week & Holidays
Complimentary medication compliance packaging

Mobility Equipment
Compression Therapy
Bathroom Safety
Rentals & Deliveries

2425 Truscott Dr., Mississauga, ON L5J 2B4 * Tel: 905.822.1615
(Park Royal Plaza)

ANJUMAN HAIR SALON

Hair Cuts
Colour
Highlights
Updos
Make up

Threading
Facials
Micro Dermabrasion
Eye Lash Extensions
Laser Hair Removal
Skin Tag Removal

10% Discount
(on your first visit to Anjuman Hair Salon)

Coupon expires October 31, 2018

2425 Truscott Dr., Unit 3, Mississauga
(289) 325-3352 (905) 822-4040

All advertisers live or work in Park Royal. Their sponsorship makes this newsletter possible. Please support them.

The Park Royal Community Association (PRCA) strives to foster a sense of belonging, pride and commitment to the people, businesses, and institutions within its community.

This free newsletter will be published four times a year and distributed to all members of the community.

Special thanks to Karen Ras, Matthew Wilkinson, Trevor Isaac, David Field, Dorothy Syer, Dan Duncan, Chris Ganowski, Karen Ryan, Richard Barrett, Karen Switzer, Neena Popat, Nicole Sartor, Derek Chaves and Nigel Boubert for making this edition of the newsletter possible.

Contact us at:
President: Trevor Isaac
Email: prcaboard@parkroyalca.org
Web: www.parkroyalca.org
Like us on Facebook
Follow @parkroyalca on Twitter



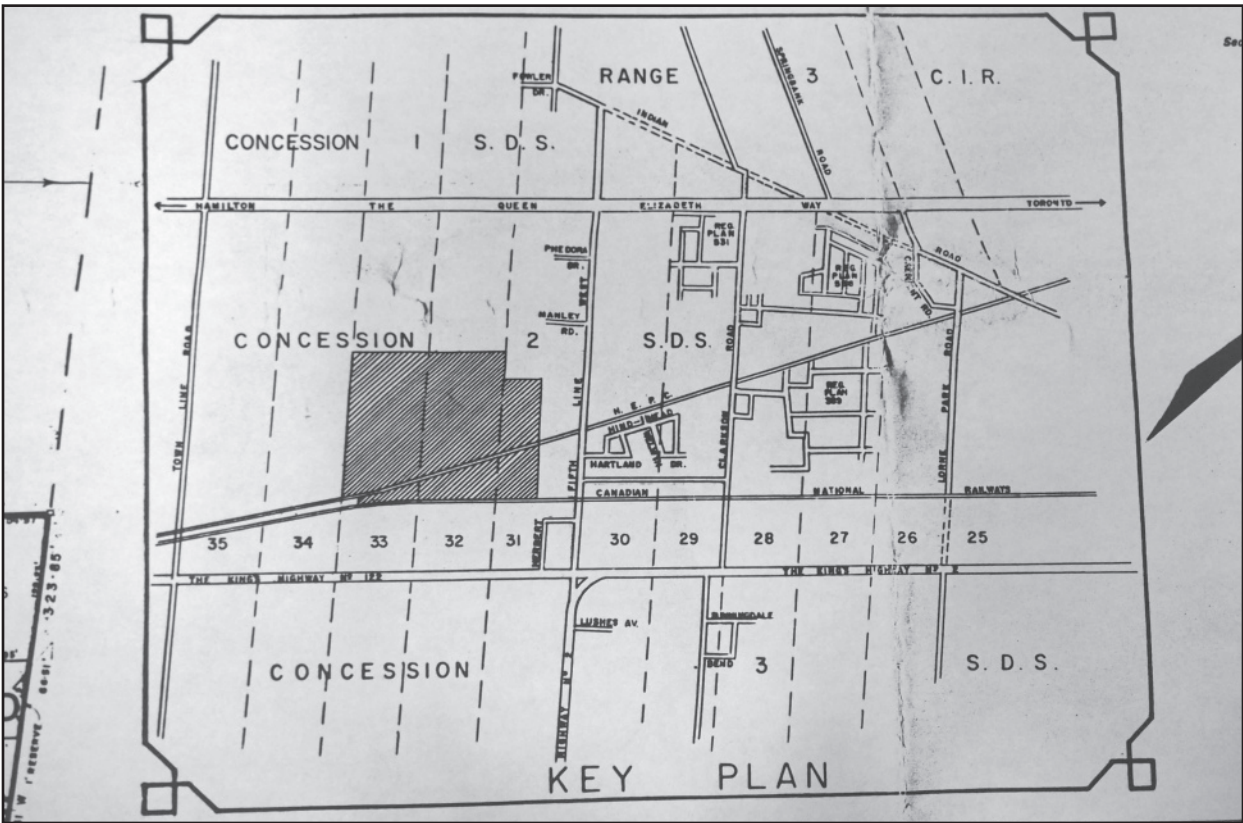
Park Royal officially opened 60 years ago

In three years 2,700 homes were built on 900 acres of former farmland

Made of farms belonging to the Greeniaus, Grice, Hawkins, Johnson, Kelly, Manley, Shunk and Speck families, the United Lands Corporation began construction on Park Royal in September of 1956. Park Royal was the second subdivision in Clarkson and the housing was designed for workers from Sheridan Research Park and nearby industrial zones.

Built over three years and in five phases 2,700 homes were built over 900 acres. By June 1958 the first child from the subdivision was born. The community featured one central television aerial that transmitted through underground conduits to all homes, as well as underground power and telephone lines (the first in Mississauga).

A temporary branch of The Toronto-Dominion Bank was established in 1961; the Park Royal Shopping Centre became the first major shopping plaza in Clarkson in 1965 when the Park Royal population was 12,000 and featured a Steinberg Supermarket. The Clarkson Community Centre later opened on February 28, 1971.



Courtesy of Heritage Mississauga

Park Royal and Clarkson before development of Park Royal began in 1956.

The Opening of Park Royal on August 9th, 1958



All Photos Courtesy of Heritage Mississauga

Mayor of London Sir Denis H. Truscott, the Lady Mayoress of London and Reeve Mary Fix (right).

By Karen Ryan

On August 9th, 1958, Sir Denis H. Truscott and the Lady Mayoress of London, England were invited to the opening ceremonies of the community of Park Royal. Denis Truscott for whom Truscott Drive was named, unveiled a metal and concrete sculpture that resides today at Wiseman Court and Southdown Rd.

After some misadventure, the original plaque from the sculpture is now safely in the hands of Heritage Mississauga.



PRCA turns 60

The Park Royal Community Association began 60 years ago with 75 members on May 1958. Originally named the Park Royal Ratepayers Association, it changed its name in 1962. The first meetings were in member's homes and then moved to the newly built Willow Glen Public School. At the beginning it organized a Field Day, May 24th fireworks, bingo nights, started Girl Guides, Boy Scouts, Brownies, sponsored hockey teams and community dances.

In May of 1964 the Park Royal Community Association was given the use of a store by the United Lands Corporation, the developer of Park Royal, in the Park Royal Plaza to use as a community centre. The association would hold many events to raise money to build a new permanent community centre. The United Lands Corporation offered land for the community centre and matched dollar for dollar what the Park Royal Community Association collected for membership.

The Clarkson Community Centre and Arena opened in its current location on February 28, 1971. It was renovated and reopened on September 21, 2002 and featured the addition of the Clarkson Library.

A special thanks to Matthew Wilkinson of Heritage Mississauga for the photos and Richard Collins who wrote the original history of Park Royal on which these summaries are based.

Join the Park Royal Community Association

Membership fee: \$5 per person. Enclose a cheque payable to "Park Royal Community Association" in an envelope labelled PRCA and deposit the envelope in the mailbox at 1515 Thetford Court. Call Tamara at (905) 822-3786 if you need help obtaining your membership.

Join online.
It's easy and the same price.



Your \$5 membership fee can be paid by credit card or PayPal.

www.parkroyalca.org

<input type="text"/>	<input type="text"/>
First Name	Last Name
<input type="text"/>	<input type="text"/>
Street Address	Postal Code
<input type="text"/>	<input type="text"/>
E-mail Address	Phone Number
<input type="text"/>	<input type="text"/>
Member Consent (Signature)	Date: Yr / Mo / Da
<input type="text"/>	<input type="text"/>
Membership Director Approval	Date: Yr / Mo / Da

By completing the form and submitting the annual membership fee:

- I request to become a member of the Park Royal Community Association.
- I confirm that I live within the PRCA geographical boundaries at the address declared.
- I consent to being contacted by the PRCA using the provided information.

The PRCA confirms that it will:

- Not publish your contact information without requesting your consent.
- Maintain the privacy of your information within its powers to reasonably do so.
- Update your membership information when you provide same.
- Unsubscribe you from membership, mailings or emails upon your request.